

Nortec Rotating Bolthole Scanners



Olympus NDT's extensive line of high performance NORTEC Eddy Current scanners is available for use with Nortec Eddy Current Flaw Detectors. With a wide range of features consisting of speed ranges from 40 to 3000 rpm, frequency ranges from 100 Hz to 6 MHz, multiple connector types, and multiple probe types, NORTEC scanners offer a full range of application solutions. Some of the more common applications are: airframe hole inspection with or without fasteners, wheel bolt hole inspections, surface inspections, post production testing for cracks, tube plug testing, and low frequency inspections through multiple aircraft skin layers.

Features

- Speed ranges from 40 to 3000 rpm
- Frequency ranges from 100 Hz to 6 MHz
- Connector types:
 - 4-pin LEMO
 - 4-pin Fischer
 - 4-pin Switchcraft
 - Custom tri-axial (Gulton)
- Probe types:
 - Reflection differential
 - Absolute bridge
 - Absolute reflection
 - Differential bridge
 - Differential reflection
- PowerLink™ technology
 - automatic scanner recognition and setup of frequency, gain, and filters
- Red LED alarm indicators on handheld models

Speed Range for Bolthole Scanners (rpm)

	Nortec 19eII	Nortec 24	Nortec 1000	Nortec 2000 S/D	WorkStation 210/215/220	Nortec 500
MiniMite	1200	1200	No	600 - 3000	600 - 3000	600 - 3000
RA-2000	1200	1200	No	600 - 2400	600 - 2400	600 - 2400

SpitFire	1200	1200	No	600 - 3000	600 - 3000	600 - 3000
PS-4	1 - 1500	1 - 1500	1 - 1500	1 - 1500	1 - 1500	1 - 1500
PS-5AL	60 - 200	No	No	60 - 240	60 - 240	60 - 240

MiniMite Scanner



Speed Range: Variable, 600 to 3000 rpm

Speed Control: Instrument controlled

Frequency Range: 200 kHz - 6 MHz

Probe Connector: 4-pin LEMO or 4-pin Fischer with "O" rings

Probe Types: Reflection differential

Signal Coupling: Rotary transformer

Mounting: Hand held

Orientation: No physical restrictions

Alarm: Red LED indicator, located at the rear and top of the case

Cable Connector: 16-pin LEMO

Size: 3.5" L x 1.0" W x 1.5" H (89 mm x 25 mm x 38 mm)

Weight: 4 oz (0.11 kg)

RA-2000 Scanner



Speed Range: Variable, 600 to 2400 rpm

Speed Control: Instrument controlled

Frequency Range: 200 kHz - 6 MHz

Probe Connector: 4-pin LEMO

Probe Types: Reflection differential

Signal Coupling: Rotary transformer

Mounting: Hand held

Orientation: No physical restrictions

Alarm: Red LED indicator, located at the rear and top of the case

Cable Connector: 16-pin LEMO

Size: 3.0" L x 1.25" W x 5.0" H (76 mm x 32 mm x 127 mm)

Weight: 10 oz (0.28 kg)

SpitFire 2000 Scanner



Speed Range: Variable, 600 to 3000 rpm

Speed Control: Instrument controlled

Frequency Range: 100 kHz - 6 MHz

Probe Connector: 4-pin Fischer with "O" rings

Probe Types: Reflection differential

Signal Coupling: Rotary transformer

Stall Torque: 30 oz.-inch max (0.85 kg-millimeter max)

Torque Selection: Switchable between three ranges (low, medium, and high)

Mounting: Hand-held, pistol grip, finger hook, and special fixture mounts

Orientation: No physical restrictions

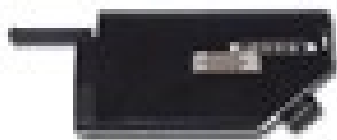
Alarms: Red LED indicator, located at the rear and top of the case

Cable Connector: 16-pin LEMO

Size: 6.0" L x 1.7" diameter (152 mm x 43 mm)

Weight: 1 lb (0.45 kg)

PS-5 AL Scanner



Speed Range: Variable, 40 to 240 rpm

Speed Control: Instrument controlled

Frequency Range: 100 kHz - 12 MHz

Probe Connector: Staveley Tri-axial (accommodates Gulston style probes)

Probe Types: Absolute and differential in both Bridge and Reflection configurations. Will also accept single coil probes

Signal Coupling: Axial rotary slip rings

Translation Range: Variable to 1.5 in. (38 mm) and reversible. Probe retraction limit is variable to compensate for different probe lengths.

Mounting: Hand-held or special fixture

Orientation: No physical restrictions

Cable Connector: 16-pin LEMO

Size: 5.0" L x 1.9" W x 2.5" H (127 mm x 48 mm x 64 mm)

Weight: 2 lbs 6 oz (1.1 kg)

PS-4 Scanner



Speed Range: Variable, 1 to 1500 rpm

Speed Control: PS-4 Controller

Frequency Range: 500 kHz - 6 MHz

Probe Connector: 6-pin LEMO or 4 pin Switchcraft

Probe Types: Reflection absolute or differential configurations

Signal Coupling: Rotary transformer

Mounting: Mounting foot provided

Orientation: No physical restrictions

Cable Connector: 22-pin Burndy connector

Size: 15.0" L x 3.25" W x 5.0" H (381 mm x 83 mm x 127 mm)

Weight: 8.5 lbs (3.9 kg)